

Angus Australia - Mating Predictor Report


Sire ID NMMR275
Sire Name MILLAH MURRAH ROLLS ROYCE R275
Date of Birth 26/07/2020
Genetic Conditions AMF,CAF,DDF,NHF,DWF,MAF,MHF,OHF,

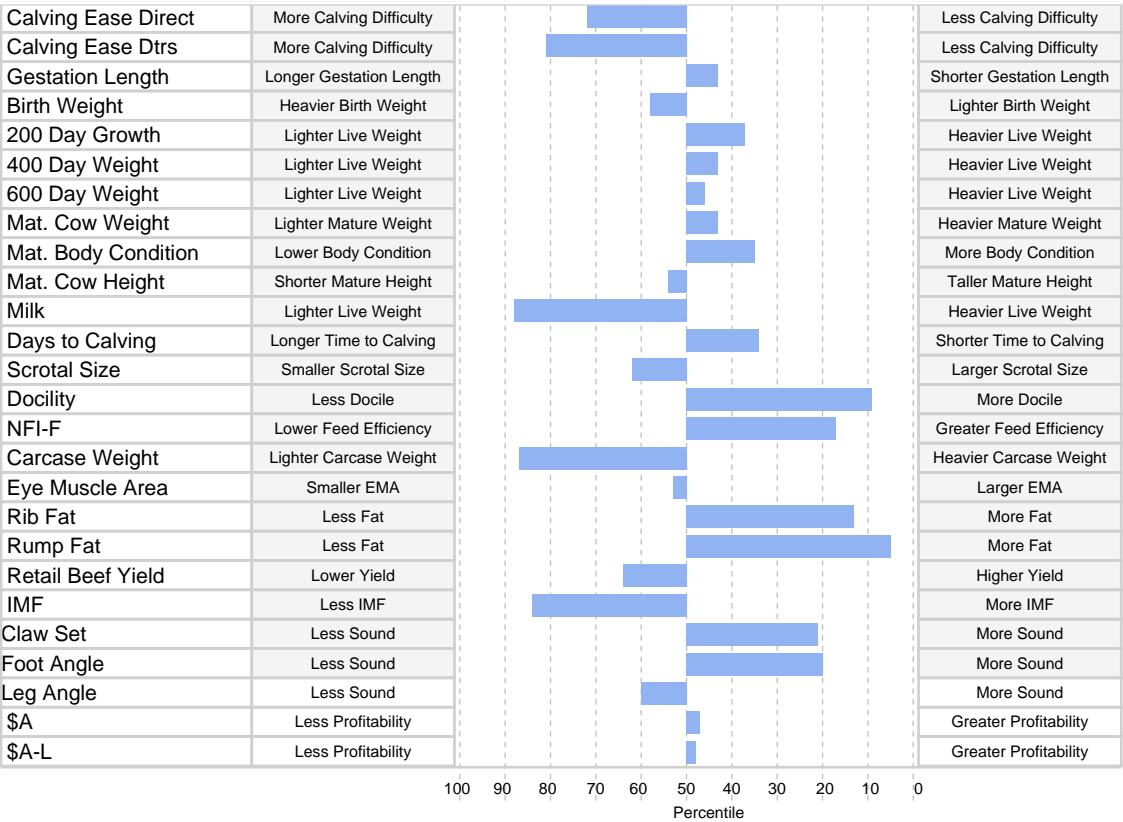
Dam ID WVM21S1
Dam Name TRAFALGAR S1
Date of Birth 20/03/2021
Inventory Season Autumn
Genetic Conditions AMFU,CAFU,DDFU,NHFU
Inbreeding Coeff. 3%

EF COMMANDO 1366^{PV}
MILLAH MURRAH PARATROOPER
MILLAH MURRAH ELA M9^{PV}
Sire: MILLAH MURRAH ROLLS ROYCE
COONAMBLE HECTOR H249^C
MILLAH MURRAH ABIGAIL M293^{PV}
MILLAH MURRAH ABIGAIL J210^{SV}

MOHNEN SUBSTANTIAL 272[#]
SITZ STELLAR 726D^{PV}
SITZ PRIDE 200B[#]
Dam: TRAFALGAR S1^{PV}
COONAMBLE ELEVATOR E11^{PV}
COONAMBLE N20^{PV}
COONAMBLE F152^{PV}



Expected Average Progeny Values													
 TACE	Calving Ease				Growth			Maternal				Fertility	
	Calving Ease Dir	Calving Ease Dtrs	Gest. Length	Birth Wt	200 Day Growth	400 Day Weight	600 Day Weight	Mat. Cow Weight	MBC	MCH	Milk	Days to Calving	Scrotal Size
EBV	+0.2	+0.1	-5.0	+4.2	+54	+95	+122	+106	+0.3	+8.1	+11	-5.5	+1.9
Acc	71%	63%	88%	89%	88%	87%	86%	82%	65%	66%	78%	48%	84%
Perc	72	81	43	58	37	43	46	43	35	54	88	34	62
	Temp	Carcase						Feed	Structural			Indexes	
	Docility	Carcase Weight	EMA	Rib Fat	Rump Fat	RBY	IMF	NFI-F	Claw Set	Foot Angle	Leg Angle	\$A	\$A-L
EBV	+34	+53	+6.2	+2.0	+3.5	+0.2	+1.0	-0.11	+0.69	+0.82	+1.04	\$211	\$359
Acc	83%	76%	73%	73%	74%	66%	76%	64%	70%	70%	67%	-	-
Perc	9	87	53	13	5	64	84	17	21	20	60	47	48



Important Notices Expected average progeny values are provided to assist breeders estimate the outcome of particular mating combinations. The actual TransTasman Angus Cattle Evaluation EBVs for any individual progeny resulting from a particular mating are likely to vary from the expected average values.

The information contained in this animal listing has been compiled from databases owned by Angus Australia and has been designed, created and published by Angus Australia. The information is owned by Angus Australia and has been published for information purposes only. No section or individual item may be reproduced or used by any person or other legal entity for any commercial purpose whatsoever, without the prior express consent of Angus Australia.

Angus Australia acknowledges the funds provided by the Australian Government through the Meat & Livestock Australia Donor Company (MDC). This report was created as a result of a collaboration between Angus Australia and Meat & Livestock Australia Donor Company (MDC) (Project P.PSH.1063).

© 2025 Angus Australia