

Angus Australia - Mating Predictor Report

Sire ID NMMR38
Sire Name MILLAH MURRAH ROCKET MAN R38
Date of Birth 26/01/2020
Genetic Conditions AMF,CAF,DDF,NHF,DWF,MAF,MHF,OHF,


Dam ID WVMP34
Dam Name TRAFALGAR PHOEBE P34
Date of Birth 27/02/2018
Inventory Season Autumn
Genetic Conditions AMF,CAF,DDF,NHF

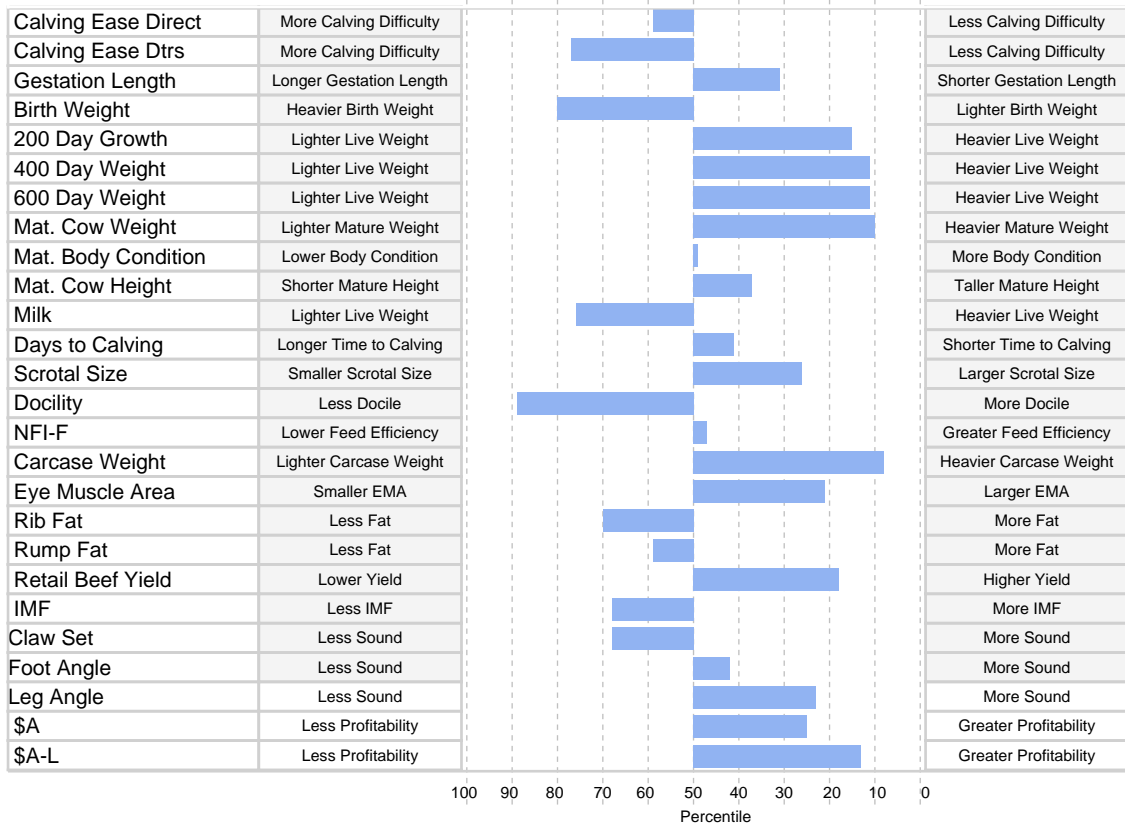
Inbreeding Coeff. 4%

EF COMMANDO 1366^{PV}
MILLAH MURRAH PARATROOPER
MILLAH MURRAH ELA M9^{PV}
Sire: MILLAH MURRAH ROCKET MAN R38
LD CAPITALIST 316^{PV}
MILLAH MURRAH ABIGAIL P57^{PV}
MILLAH MURRAH ABIGAIL H232^{PV}

AYRVALE GENERAL G18^{PV}
ESSLEMONT GENERAL L8^{SV}
ESSLEMONT JOANNA J9[#]
Dam: TRAFALGAR PHOEBE P34
ESSLEMONT EQUATOR H1^{SV}
ESSLEMONT KIORA K34[#]
ESSLEMONT HELENA H7^{SV}



Expected Average Progeny Values													
	Calving Ease				Growth			Maternal				Fertility	
	Calving Ease Dir	Calving Ease Dtrs	Gest. Length	Birth Wt	200 Day Growth	400 Day Weight	600 Day Weight	Mat. Cow Weight	MBC	MCH	Milk	Days to Calving	Scrotal Size
EBV	+1.9	+0.8	-5.8	+5.4	+60	+109	+142	+133	+0.3	+9.0	+14	-5.2	+2.9
Acc	69%	62%	89%	89%	90%	88%	88%	83%	72%	73%	77%	47%	86%
Perc	59	77	31	80	15	11	11	10	50	37	76	41	26
	Temp	Carcase						Feed	Structural			Indexes	
	Docility	Carcase Weight	EMA	Rib Fat	Rump Fat	RBV	IMF	NFI-F	Claw Set	Foot Angle	Leg Angle	\$A	\$A-L
EBV	+9	+87	+9.1	-0.8	-0.7	+1.0	+1.7	+0.21	+0.92	+0.93	+0.93	\$230	\$405
Acc	85%	75%	76%	75%	76%	68%	78%	64%	76%	76%	74%	-	-
Perc	89	8	21	70	59	18	68	47	68	42	23	25	13



Important Notices Expected average progeny values are provided to assist breeders estimate the outcome of particular mating combinations. The actual TransTasman Angus Cattle Evaluation EBVs for any individual progeny resulting from a particular mating are likely to vary from the expected average values.

The information contained in this animal listing has been compiled from databases owned by Angus Australia and has been designed, created and published by Angus Australia. The information is owned by Angus Australia and has been published for information purposes only. No section or individual item may be reproduced or used by any person or other legal entity for any commercial purpose whatsoever, without the prior express consent of Angus Australia.

Angus Australia acknowledges the funds provided by the Australian Government through the Meat & Livestock Australia Donor Company (MDC). This report was created as a result of a collaboration between Angus Australia and Meat & Livestock Australia Donor Company (MDC) (Project P.PSH.1063).

© 2025 Angus Australia