

Angus Australia - Mating Predictor Report


Sire ID WDC21S54
Sire Name COONAMBLE SAMSON S54
Date of Birth 02/04/2021
Genetic Conditions AMF,CAF,DDF,NHF,DWF,MAF,MHF,OHF,

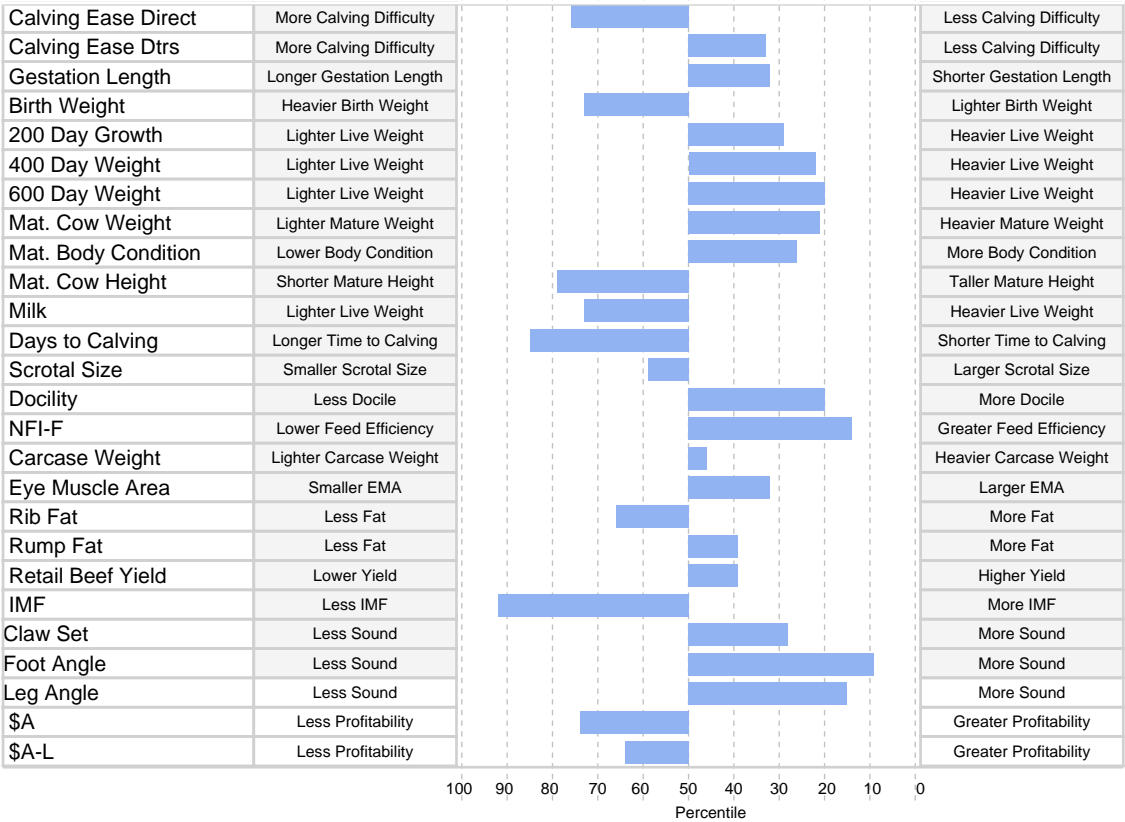
Dam ID WVM21S4
Dam Name TRAFALGAR S4
Date of Birth 20/03/2021
Inventory Season Autumn
Genetic Conditions AMFU,CAFU,DDFU,NHFU
Inbreeding Coeff. 5%

BALDRIDGE BRONC^{SV}
COONAMBLE PROSPECT P372^{PV}
COONAMBLE L105^{PV}
Sire: COONAMBLE SAMSON S54^{PV}
COONAMBLE MAVERICK M310^U
COONAMBLE Q369^{SV}
COONAMBLE N363[#]

MATAURI REALITY 839[#]
TAIMATE LAZARUS L12^{SV}
TAIMATE 1348[#]
Dam: TRAFALGAR S4^{PV}
COONAMBLE ELEVATOR E11^{PV}
COONAMBLE L329^{PV}
COONAMBLE D94^{SV}



Expected Average Progeny Values													
	Calving Ease				Growth			Maternal				Fertility	
	Calving Ease Dir	Calving Ease Dtrs	Gest. Length	Birth Wt	200 Day Growth	400 Day Weight	600 Day Weight	Mat. Cow Weight	MBC	MCH	Milk	Days to Calving	Scrotal Size
EBV	-0.5	+5.1	-5.7	+5.0	+56	+104	+135	+122	+0.4	+6.7	+14	-3.1	+2.0
Acc	72%	60%	89%	89%	88%	86%	85%	82%	65%	66%	77%	47%	82%
Perc	76	33	32	73	29	22	20	21	26	79	73	85	59
	Temp	Carcase						Feed	Structural			Indexes	
	Docility	Carcase Weight	EMA	Rib Fat	Rump Fat	RBV	IMF	NFI-F	Claw Set	Foot Angle	Leg Angle	\$A	\$A-L
EBV	+29	+70	+8.0	-0.6	+0.4	+0.6	+0.4	-0.16	+0.72	+0.75	+0.88	\$186	\$339
Acc	78%	75%	71%	71%	72%	64%	75%	63%	65%	65%	62%	-	-
Perc	20	46	32	66	39	39	92	14	28	9	15	74	64



Important Notices Expected average progeny values are provided to assist breeders estimate the outcome of particular mating combinations. The actual TransTasman Angus Cattle Evaluation EBVs for any individual progeny resulting from a particular mating are likely to vary from the expected average values.

The information contained in this animal listing has been compiled from databases owned by Angus Australia and has been designed, created and published by Angus Australia. The information is owned by Angus Australia and has been published for information purposes only. No section or individual item may be reproduced or used by any person or other legal entity for any commercial purpose whatsoever, without the prior express consent of Angus Australia.

Angus Australia acknowledges the funds provided by the Australian Government through the Meat & Livestock Australia Donor Company (MDC). This report was created as a result of a collaboration between Angus Australia and Meat & Livestock Australia Donor Company (MDC) (Project P.PSH.1063).

© 2025 Angus Australia