

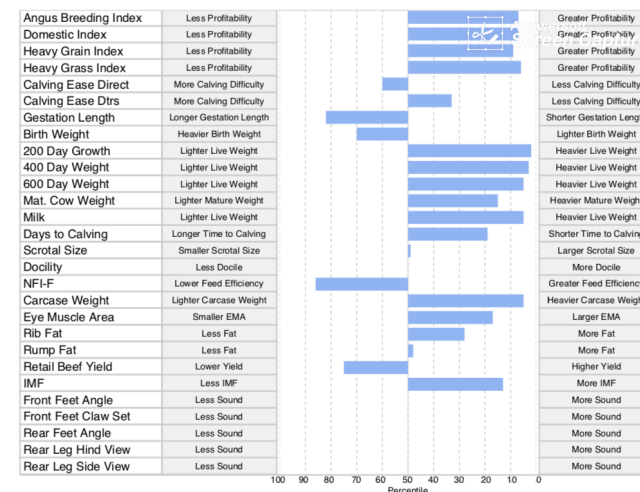
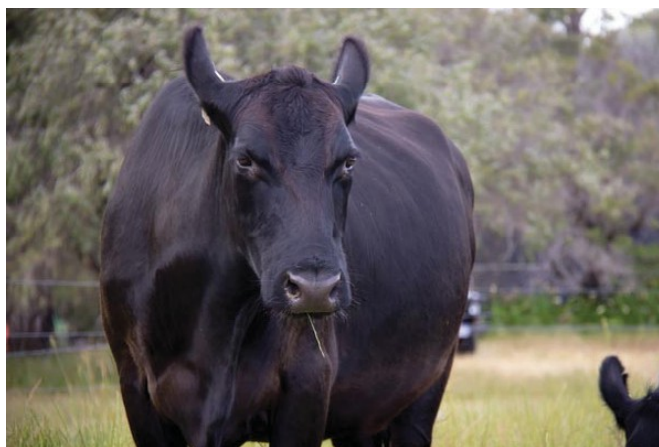


2018 Embryo Transfer

0438 188 834


Trafalgar Neda N9

G A R Prophet



Description

ABI 141

Expected Average Progeny Values															
	Calving Ease				Growth					Fertility		Temp		Feed	
	Calving Ease Dir	Calving Ease Dtrs	Gest. Length	Birth Wt	200 Day Growth	400 Day Weight	600 Day Weight	Mat. Cow Weight	Milk	Days to Calving	Scrotal Size	Docility	NFI-F		
EBV	-0.2	+1.4	-2.2	+5.1	+59	+102	+132	+110	+22	-6.0	+1.8		+0.49		
Acc	54%	50%	60%	61%	60%	59%	59%	58%	57%	42%	58%		48%		
Perc	60	33	82	70	2	3	5	15	5	19	50	-	86		
	Carcase						Structural					Selection Index			
	Carcase Weight	EMA	Rib Fat	Rump Fat	RBV	IMF	FA	FC	RA	RH	RS	Angus Breeding	Domestic	Heavy Grain	Heavy Grass
EBV	+77	+7.2	+0.7	-0.1	-0.1	+2.8	-	-	-	-	-	+141	+125	+156	+133
Acc	56%	55%	57%	56%	54%	55%						-	-	-	-
Perc	5	17	28	48	75	13	-	-	-	-	-	7	7	9	6