

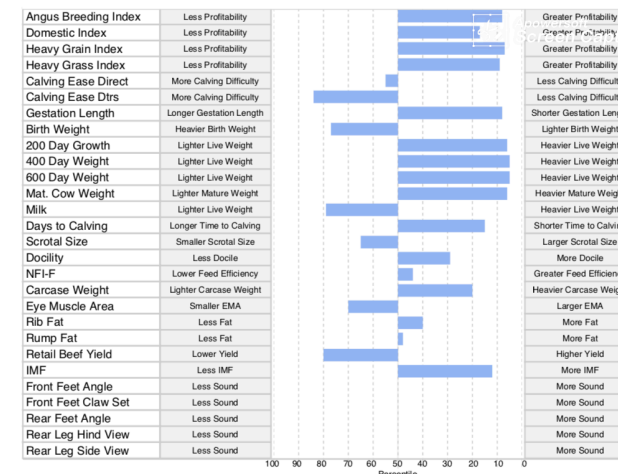
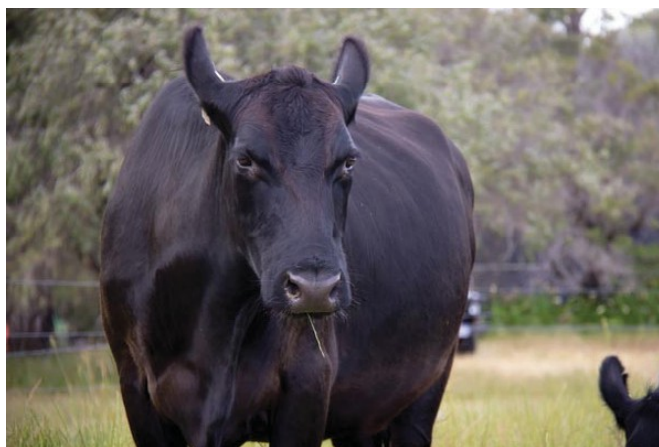


2018 Embryo Transfer


0438 188 834

Esselemont Lemon L5 WWEL5

Te Mania Emporer VTME 343



Description **ABI 140**

Expected Average Progeny Values															
 Angus	Calving Ease				Growth					Fertility					
	Calving Ease Dir	Calving Ease Dtrs	Gest. Length	Birth Wt	200 Day Growth	400 Day Weight	600 Day Weight	Mat. Cow Weight	Milk	Days to Calving	Scrotal Size	Dockity	NFI-F		
	EBV	+0.1	-1.6	-7.2	+5.4	+55	+99	+132	+120	+12	-6.3	+1.5	+10	+0.14	
	Acc	58%	53%	65%	63%	62%	62%	63%	61%	59%	49%	60%	59%	55%	
	Perc	55	84	8	77	6	5	5	6	79	15	65	29	44	
	Carcase						Structural					Selection Index			
	Carcase Weight	EMA	Rib Fat	Rump Fat	RBV	IMF	FA	FC	RA	RH	RS	Angus Breeding	Domestic	Heavy Grain	Heavy Grass
EBV	+69	+3.9	+0.3	-0.1	-0.3	+2.9	-	-	-	-	-	+140	+120	+160	+130
Acc	60%	59%	60%	59%	58%	59%						-	-	-	-
Perc	20	70	40	48	80	12	-	-	-	-	-	8	17	7	9