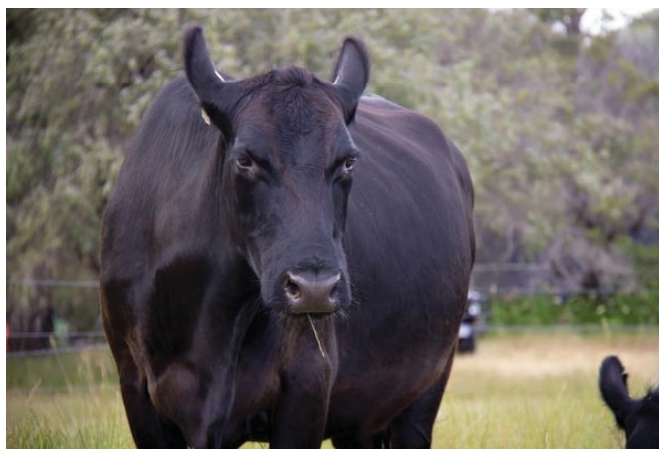




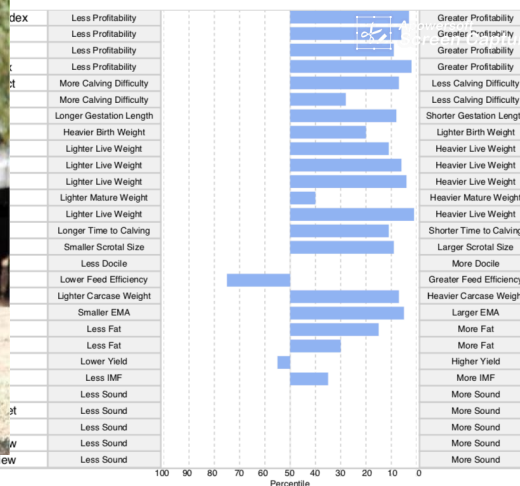
# 2018 Embryo Transfer

0438 188 834

Ayrvale Kate HIOK19




Granite Ridge Kaiser SJKK26



## Description

ABI 148

Expected Average Progeny Values																
 Angus	Calving Ease				Growth					Fertility						
	Calving Ease Dir	Calving Ease Dtrs	Gest. Length	Birth Wt	200 Day Growth	400 Day Weight	600 Day Weight	Mat. Cow Weight	Milk	Days to Calving	Scrotal Size	Docility	NFI-F			
	EBV	+3.7	+1.6	-7.1	+3.0	+53	+98	+133	+95	+28	-6.7	+2.8		+0.38		
	Acc	50%	39%	62%	62%	61%	60%	60%	55%	49%	36%	58%		43%		
	Perc	7	28	8	20	11	6	4	40	1	11	9	-	75		
	Carcase						Structural					Selection Index				
	Carcase Weight	EMA	Rib Fat	Rump Fat	RBV	IMF	FA	FC	RA	RH	RS	Angus Breeding	Domestic	Heavy Grain	Heavy Grass	
	EBV	+75	+9.0	+1.2	+0.5	+0.3	+2.0	-	-	-	-	-	+148	+126	+156	+142
	Acc	52%	53%	54%	53%	50%	52%						-	-	-	-
	Perc	7	5	15	30	55	35	-	-	-	-	-	3	6	9	2