

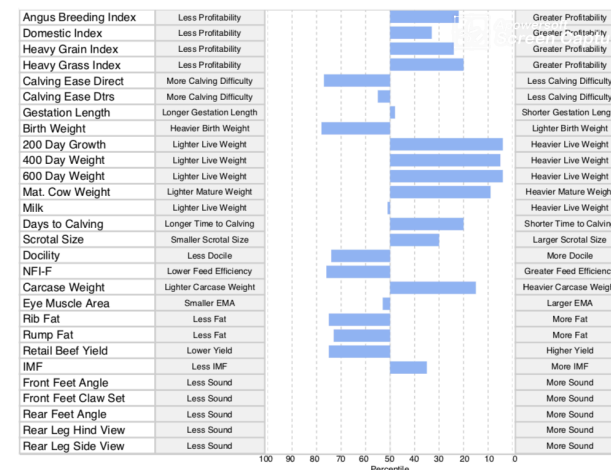
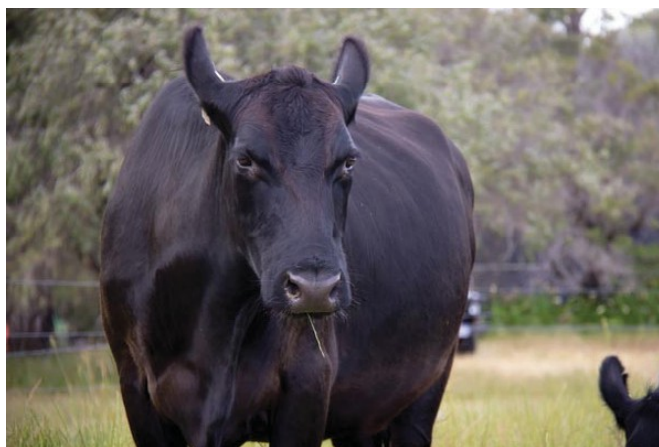


2018 Embryo Transfer

0438 188 834


Ayrvale Kimberly HIOK19

RennyLea Kodak NOR K22



Description

ABI 129

Expected Average Progeny Values																
	Calving Ease				Growth					Fertility						
	Calving Ease Dir	Calving Ease Dtrs	Gest. Length	Birth Wt	200 Day Growth	400 Day Weight	600 Day Weight	Mat. Cow Weight	Milk	Days to Calving	Scrotal Size	Docility	NFI-F			
	EBV	-1.5	+0.3	-4.1	+5.5	+56	+100	+133	+116	+15	-5.9	+2.2	-3	+0.39		
	Acc	46%	39%	52%	54%	53%	52%	52%	50%	47%	35%	51%	43%	42%		
	Perc	77	55	48	78	4	5	4	9	51	20	30	74	76		
	Carcase						Structural					Selection Index				
	Carcase Weight	EMA	Rib Fat	Rump Fat	RBV	IMF	FA	FC	RA	RH	RS	Angus Breeding	Domestic	Heavy Grain	Heavy Grass	
	EBV	+71	+4.9	-0.8	-0.9	-0.1	+2.0	-	-	-	-	-	+129	+114	+139	+124
	Acc	48%	47%	49%	48%	46%	47%					-	-	-	-	
	Perc	15	53	75	73	75	35	-	-	-	-	-	22	33	24	20